

CI/SfB	July 2017
Uniclass	
Issue 01	

Monarfloor Tranquilt System

Sound Protection

Monarfloor Tranquilt System

Lightweight acoustic isolation system for floating screeds.

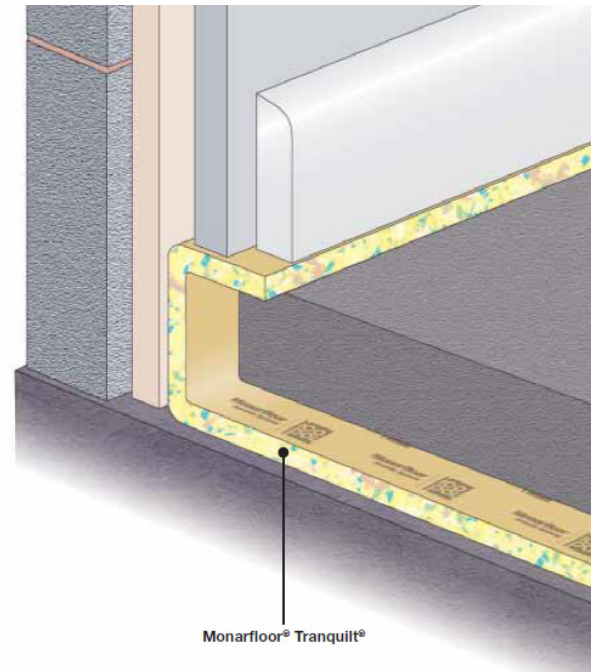
Monarfloor Tranquilt reduces impact and flanking transmission within pre-cast and in-situ concrete floors in new-build and refurbishment

projects by forming an isolation layer between the sub floor and the finished screed.

When installed as part of a complete sound reduction system it enables a concrete floor surpass to the sound insulation performance requirements for separating party floors in Approved Document E of the Building Regulations.

Features and Benefits

- Isolates finished screed from the sub floor reducing sound transmission.
- Has superior dynamic stiffness and acoustic isolation performance.
- Superior acoustic damping properties.
- One part system with integral flanking, jointing and corners that are formed in-situ.
- Can be used with sand/cement and proprietary screeds without the need for additional polythene or waterproofing membrane.
- Lightweight and easy to handle and install.
- Surpasses performance requirements of Approved Document E of the Building Regulations.
- For sites that are to be pre-completion sound tested, Tranquilt provides a quick and easy route to up to 4 cost neutral Sustainable Homes Credits (when used as part of a system).
- Specified within Robust Details E-FC-11(as of April 2009 – refer to Robust Details Handbook for fully compliant specification).



Construction

Monarfloor Tranquilt is a composite system comprising a layer of LRAC™ foam sealed both sides with a polyethylene membrane.

For full details refer to our Product Information and Safety Data Sheet.

Product Data

Roll size	20m long x 1,5m wide
Thickness	10mm
Roll weight	17,5kg (max)
DnT,w + Ctr	50dB
LnT,w	≤50dB

Typical mean values based on 150mm precast planks.



EN 13707 15 0086-CPD-505779

Ref: ICO1906

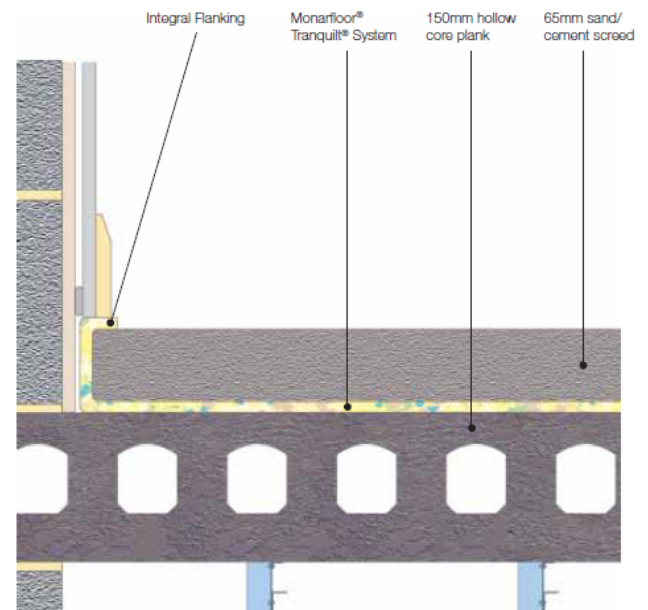
CI/SFB	July 2017
Uniclass	
Issue 01	

Monarfloor Tranquilt System

Sound Protection

Installation at a glance

- Ensure concrete sub floor is structurally sound, clean and dry.
- Roll out Monarfloor Tranquilt over the concrete sub floor with the jointing strip to the upper surface face. It is advised that all the Tranquilt be loose laid out over whole floor area to ensure that it's positioned correctly before joining.
- Turn the perimeter edges up to all perimeters, 150mm minimum.
- Butt edges tightly together, with the overlapping polyethylene uppermost and glue to adjoining Tranquilt using Monarfloor Acoustic Adhesive.
- Form the corners to the contour of the upstands and adhere with Monarfloor Acoustic Adhesive. Ensure sufficient upstand to fold over to flank any skirting or architrave.
- Lay a minimum of 65mm sand and cement or minimum 40mm proprietary screed over the Tranquilt.
- Complete construction and install skirting using the protruding Tranquilt® to form an isolation between skirting and screed, trimming off any excess flush with the skirting.



Monarfloor® Tranquilt® over 65mm sand/cement screed and 150mm precast concrete plank.

For full details including advice on services and penetrations refer to our Monarfloor Tranquilt Installation Sheet or visit our website animation: www.monarfloor.co.uk

Technical Support

Monarfloor Acoustic Systems offers FREE technical advice and assistance on all aspects of acoustic systems.

We can also undertake site visits to provide contractors with advice and assistance at every stage of a project from concept to completion.

Related Products

- **Monarfloor® Wall Cap 400 System** – acoustic isolation system for separating party cavity walls within multi-rise developments.
- **Monarfloor® Wall Cap 200 System** – acoustic isolation system for separating flanking walls within multi-rise developments.
- **Monarfloor® Bridgestop® System** – acoustic isolation system for party walls on raft foundations or continual slab.
- **Monarfloor® Acoustic Adhesive**

For full details refer to our Monarfloor Product Data Sheets.



EN 13707 15 0086-CPD-505779

Ref: ICO1906